

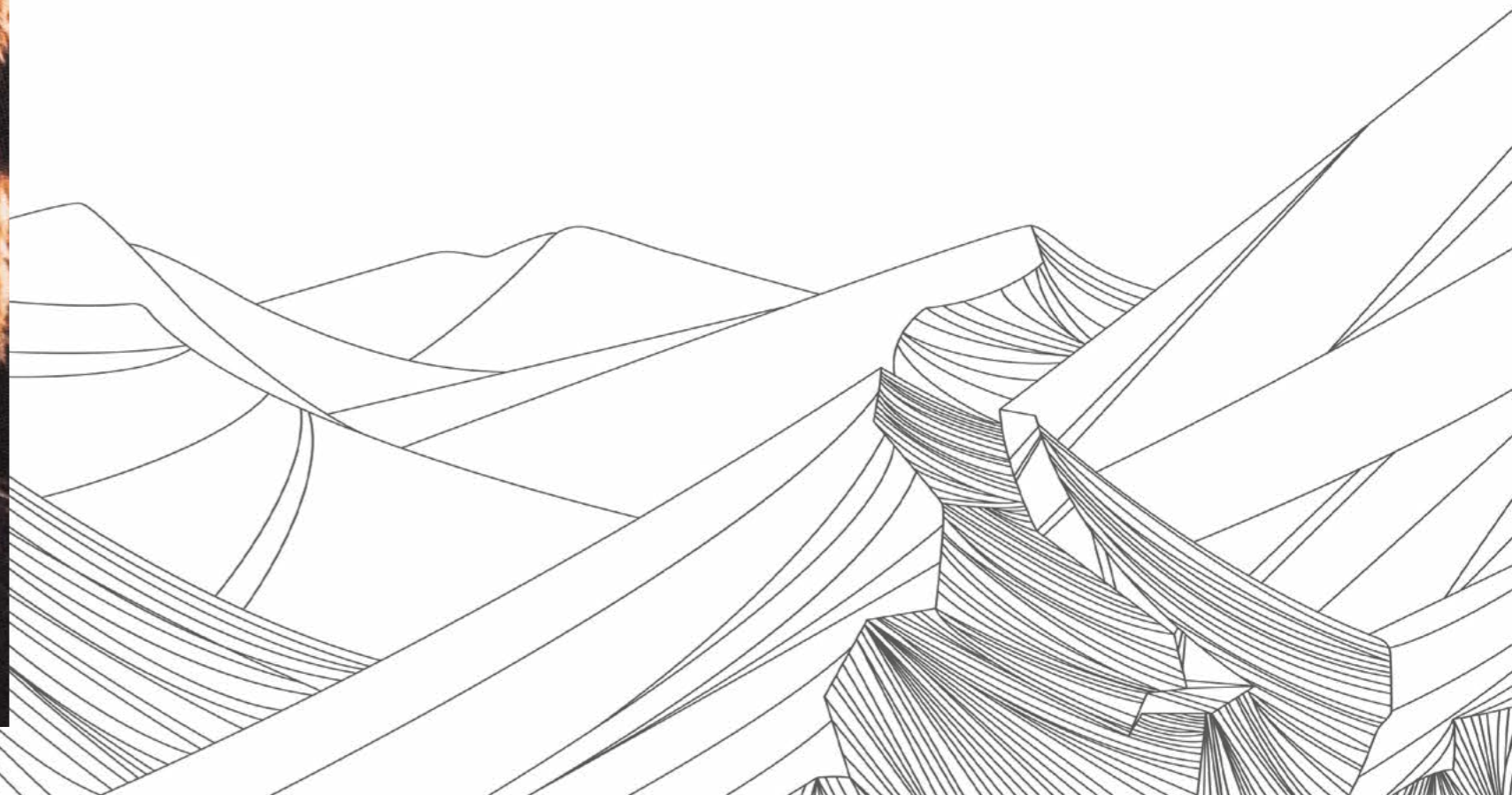


Open up new opportunities with DTG printing solutions.

## aeoon DTG printers

aeoon DTG printers offer superior quality and photorealistic DTG prints at the highest printing speed. We are proud to work with a versatile and efficient team that is flexible and strongly focused on meeting our customer's individual requirements.

Our goal is to offer the most innovative machine designs with unmatched durability that enable our customers to produce the best DTG prints available for their customers. Our customers profitability and success are paramount to aeoon.



# aeoon end-to-end DTG solutions

## Outstanding print quality

- Print photorealistic pictures, gradients, thin lines
- Excellent hand feel of the print
- GOTS approved and OEKO-Tex® certified inks and fluids

## Technical & Support

- On-site, remote and digital support
- Minimise operating and maintenance costs
- Prevent faults and system failures

## All-in-one solutions for DTG

- Many years of experience in DTG industry
- Reliable partner and dealer network
- Smart end-to-end solutions for digital textile printing

## Ready to automate

- Integrated OPC-UA and REST interface
- POD-Fulfillment – using any online marketplace platform including Shopify®, WooCommerce, Etsy, Amazon, and more.

## Offline Pretreatment

- Creating an efficient workflow
- No corrosion and rust inside the printer
- Automatic fluid change

## Made in Austria



- High quality industrial DTG equipment
- Customized solutions
- Local and regional supplier network

We build long-lasting printers and life-long partnerships!



\* Depending on the performance of the operator, the material and design and on dark/colored garment. Printing size: Din A4 (Maikuro), 40x20cm/ ~16x8in (Compact, Compact PLUS, Kyo, Kyo PLUS, Kyo Link, Hybrid)



For demand-oriented textile printing

# Hybrid Series

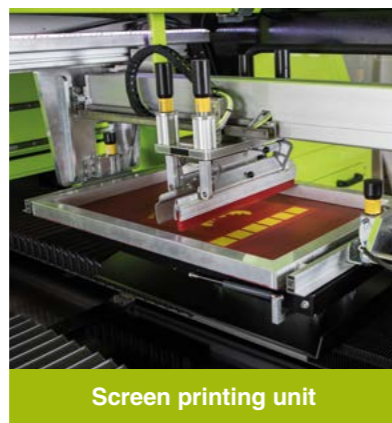


- **Combination is key** – The Hybrid combines the advantages of screen printing and DTG printing in one machine.
- **Printing on complex fabrics** – Customers can print on complex fabrics, with or without pre-treatment. The combination of DTG and screen printing saves white ink, while delivering a premium product.
- **The best of both worlds** – This machine can do both: Individual print jobs and long runs. It offers customers the best of both DTG and screen printing. This Hybrid solution handles registration issues with other Hybrid add on solutions effortlessly before applying the DTG ink.
- **ADT – aeoon Dry Technologies** – you will instantly dry your freshly printed screen design textile friendly by using less energy.
- **KTS – KyoToScreen** – Print directly on the screen! No film needed, saves space – requires only a small dark room, requires only a small UV chamber.
- **Endless possibilities** – There are countless forms of application and special effects that can be used on our Hybrid model to make your designs even more unique and exciting. Some of the possibilities are: Glitter, Foil, Foam, Devoré, Caviar and other applications such as embroidery, stones, Swarovski crystals, transfers, transflock, etc.

## Features that make the difference



High performance NIR-Dryer



Screen printing unit



KTS - KytToScreen pallet

## DTG ink channel configurations

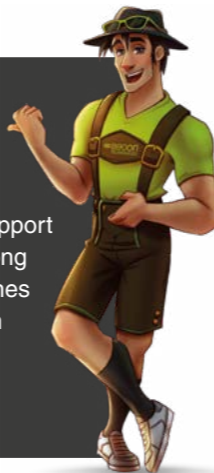
8 Print Heads	C M Y K + K Y M C
	C M Y K + W W W W
	C M Y K + S S + W W
12 Print Heads	C M Y K + K Y M C + W W W W
	C M Y K + W W W W + W W W W
	C M Y K + S S + W W W W W W

\*) S means Gamut Expansion Colors (GECs) like red, orange, green – depending on the ink set.

### aeoon's 360° maintenance & support principle

Our maintenance & support package guarantees long durability of the machines and a consistently high print quality.

Find more on page 42.



**OUTPUT<sup>1</sup>**  
Hybrid 12/3 up to  
**300**  
pieces per hour  
on dark garment



This product meets the high quality standard of aeoon Technologies.



## Technical Details:

	Hybrid 3.0	
Industrial Print Heads 2656 nozzles per pcs	8 Kyocera KJ4B	12 Kyocera KJ4B
Print Tables	3	3
Screenprint Unit	Integrated – works only for pallet size 40x50 cm; ~ 16x20 in	
KTS Pallet	1	
Intermediate Dryer	High performance NIR-Dryer	
Dimension (w x d x h)	410x350x200 cm / ~ 161 x 138 x 79 in	
Weight	2600 kg / 5732 lb	
Max. Printing Size	Framed: with 3 print stations – 40x50 cm; ~ 16x20 in Frameless: with 3 print stations – 60x90 cm; ~ 24x35 in Frameless: with 1 print station – 200x98cm; ~ 79x39 in	
Printable Materials	Cotton, synthetics, mixed fibers, canvas, wood, leather, ...	
Printing Resolution	600 dpi up to 2400 dpi resolution	
Operating System	Linux OS	
RIP Software	aeoon RIP Software	
Interface	OPC-UA and REST interface	
Crash Prevention	Integrated	
Ink Types & Volume	Water based pigment ink, 10l Container for each color	
Environmental Conditions	Temperature 22-24 °C; Humidity 50-80% non-condensing	
Electrical Supply	3 x 400/208 V + N + PE, 50/60 Hz (+/- 5%) max. power input: 8,5kVA	
Compressed Air Supply	7 bar - Quality Class 5 (residual oil: 25 mg/m <sup>3</sup> - residual dust: 40 µm/10 mg/m <sup>3</sup> - residual water + 7 DTP/7.8 gm/m <sup>3</sup> ) (max. air consumption: 500l/min)	

<sup>1</sup> Depending on the performance of the operator, on the material and design and on dark/coloured garment. Printing size: Din A4