

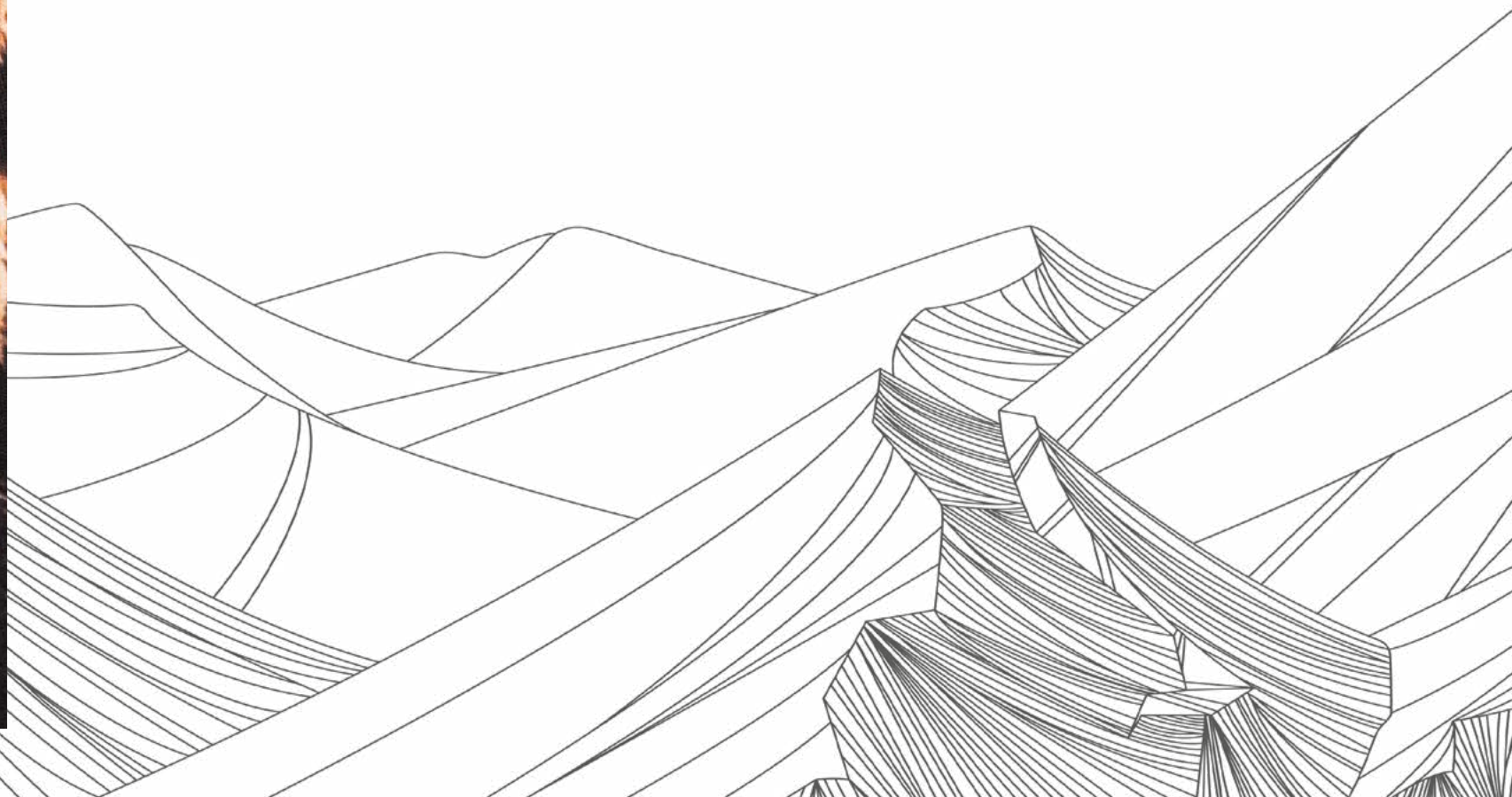


Open up new opportunities with  
DTG printing solutions.

## aeoon DTG printers

aeoon DTG printers offer superior quality and photorealistic DTG prints at the highest printing speed. We are proud to work with a versatile and efficient team that is flexible and strongly focused on meeting our customer's individual requirements.

Our goal is to offer the most innovative machine designs with unmatched durability that enable our customers to produce the best DTG prints available for their customers. Our customers profitability and success are paramount to aeoon.





# aeoon end-to-end DTG solutions

## Outstanding print quality

- Print photorealistic pictures, gradients, thin lines
- Excellent hand feel of the print
- GOTS approved and OEKO-Tex® certified inks and fluids

## Technical & Support

- On-site, remote and digital support
- Minimise operating and maintenance costs
- Prevent faults and system failures

## All-in-one solutions for DTG

- Many years of experience in DTG industry
- Reliable partner and dealer network
- Smart end-to-end solutions for digital textile printing

## Ready to automate

- Integrated OPC-UA and REST interface
- POD-Fulfillment – using any online marketplace platform including Shopify®, WooCommerce, Etsy, Amazon, and more.

## Offline Pretreatment

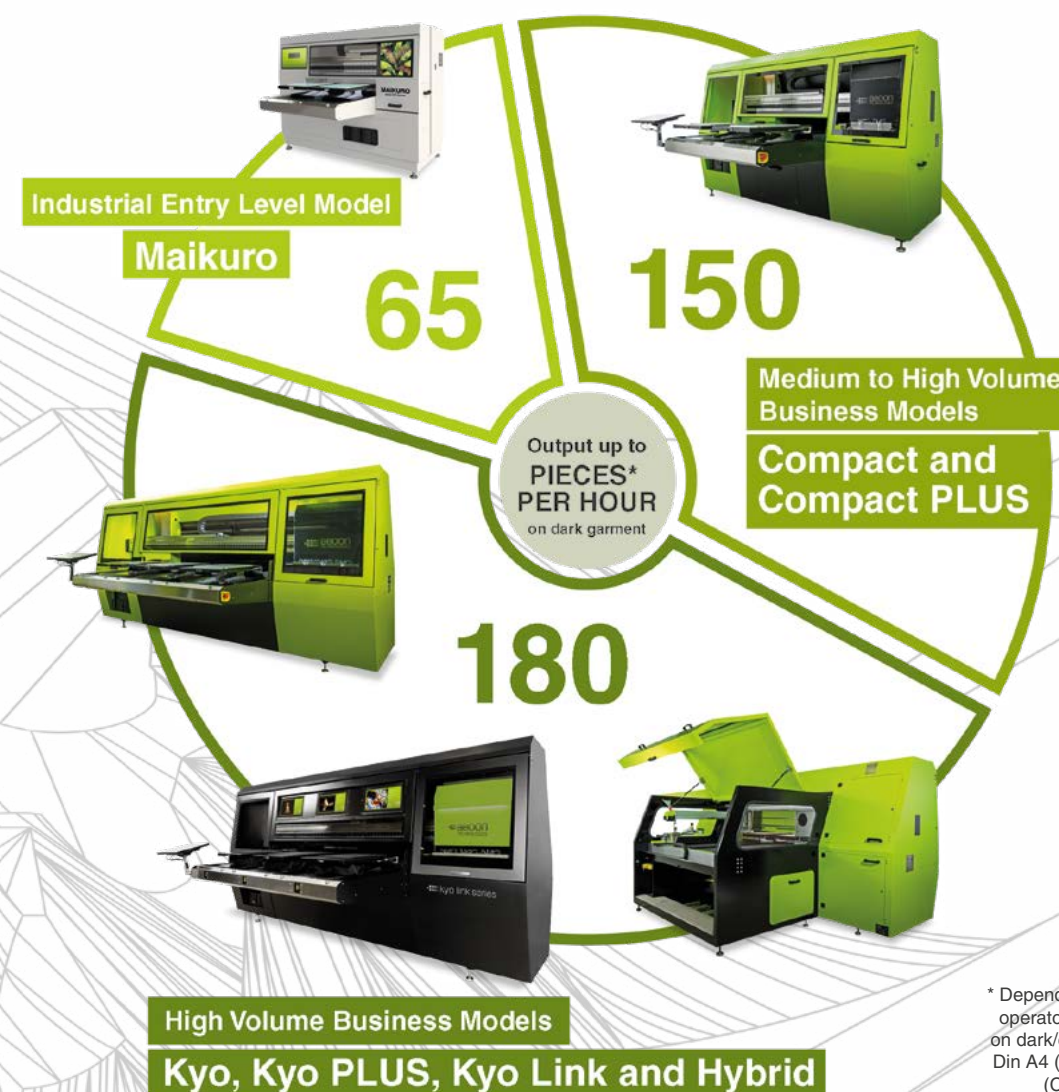
- Creating an efficient workflow
- No corrosion and rust inside the printer
- Automatic fluid change

## Made in Austria



- High quality industrial DTG equipment
- Customized solutions
- Local and regional supplier network

We build long-lasting printers and life-long partnerships!



\* Depending on the performance of the operator, the material and design and on dark/colored garment. Printing size: Din A4 (Maikuro), 40x20 cm / ~16x8 in (Compact, Compact PLUS, Kyo, Kyo PLUS, Kyo Link, Hybrid)

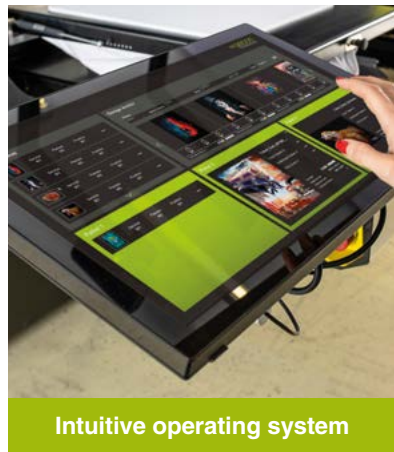


## High-performance industrial DTG printing

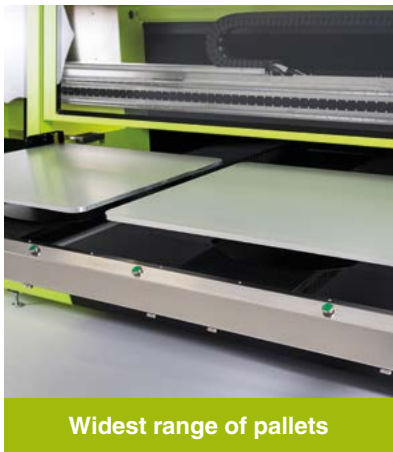
# Kyo Series

- **Highest flexibility and adaptability** – The Kyo is one of the most flexible and adaptable DTG printers on the market right now. That is because the whole developmental and production process happens in-house at the aeoon headquarters.
- **Up to 12 industrial print heads** – The Kyo can be equipped with up to 12 print heads, which allows the use of additional process colors to achieve higher color accuracy.
- **POD fulfillment – ready to automate:** The Kyo Series is easy to integrate into an automated production workflow. No matter how your business grows, aeoon printing systems grow with you.
- **Largest printing size** – Our huge selection of pallets allows you to print on almost any piece of clothing in sizes of up to 200x98 cm.
- **PLUS highlight: integrated heat press** – Garments can be pressed directly in the machine. This saves an external heat press, additional work steps and potentially even one workforce. For the first time, textiles can be pressed before, during and after printing, which enhances the durability and washability of the print. PLUS: There are no press marks!

### Features that make the difference



Intuitive operating system



Widest range of pallets



Integrated heat press

PLUS  
Highlight

### Ink channel configurations

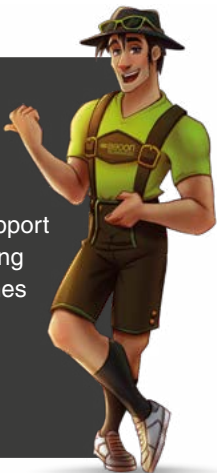
|                |                                 |
|----------------|---------------------------------|
| 4 Print Heads  | C M Y K                         |
| 8 Print Heads  | C M Y K + K Y M C               |
| 12 Print Heads | C M Y K + S S + W W W W         |
|                | C M Y K + W W W W + W W W W     |
|                | C M Y K + S S + W W W W W W W W |

\*) S means Gamut Expansion Colors (GECs) like red, orange, green – depending on the ink set.

### aeoon's 360° maintenance & support principle

Our maintenance & support package guarantees long durability of the machines and a consistently high print quality.

Find more on page 42.



OUTPUT<sup>1</sup>  
Kyo 12/3 up to  
**180**  
pieces per hour  
on dark garment



This product meets the high quality standard of aeoon Technologies.



### Technical Details:

|  | Kyo   |   |                   |   |                    |   | Kyo PLUS  |                    |
|--|---|---|-------------------|---|--------------------|---|---|--------------------|
| Industrial Print Heads<br>2656 nozzles per pcs | 4<br>Kyocera KJ4B   |   | 8<br>Kyocera KJ4B |   | 12<br>Kyocera KJ4B |   | 8<br>Kyocera KJ4B   | 12<br>Kyocera KJ4B |
| Print Tables                                   | 2   | 3 | 2                 | 3 | 2                  | 3 | 3   |                    |
| XL Version                                     | yes   | - | yes               | - | yes                | - | -   |                    |
| AHP - Heat Press                               | -   |   |                   |   |                    |   | Integrated for each printqueue;<br>40 x 50 cm; ~ 16 x 20 in |                    |
| Dimension (w x d x h)                          | 410 x 290 x 200 cm / ~ 161 x 114 x 79 in  |   |                   |   |                    |   | 410 x 290 x 200 cm / ~ 161 x 114 x 79 in                    |                    |
| Weight   | 2000 kg / 4409 lb   |   |                   |   |                    |   | 2450 kg / 5400 lb   |                    |
| Max. Printing Size                             | Frame: with 2 or 3 print stations – 40 x 50 cm; ~ 16 x 20 in<br>Frameless: with 2 or 3 print stations – 60 x 90 cm; ~ 24 x 35 in<br>Frameless: with 1 print station – 200 x 98 cm; ~ 79 x 39 in |   |                   |   |                    |   |   |                    |
| Printable Materials                            | Cotton, synthetics, mixed fibers, canvas, wood, leather, ...  |   |                   |   |                    |   |   |                    |
| Printing Resolution                            | 600 dpi up to 2400 dpi resolution   |   |                   |   |                    |   |   |                    |
| Operating System                               | Linux OS  |   |                   |   |                    |   |   |                    |
| RIP Software                                   | aeoon RIP Software  |   |                   |   |                    |   |   |                    |
| Interface                                      | OPC-UA and REST interface   |   |                   |   |                    |   |   |                    |
| Crash Prevention                               | Integrated  |   |                   |   |                    |   |   |                    |
| Ink Types & Volume                             | Water based pigment ink, 10l Container for each color   |   |                   |   |                    |   |   |                    |
| Environmental Conditions                       | Temperature 22 - 24 °C; Humidity 50 - 80 % non-condensing   |   |                   |   |                    |   |   |                    |
| Electrical Supply                              | 3 x 400/208 V + N + PE, 50/60 Hz (+/- 5 %)<br>max. power input: Kyo: 8,5 kVA; Kyo PLUS: 8,5 kVA + 6,3 kVA   |   |                   |   |                    |   |   |                    |
| Compressed Air Supply                          | 7 bar - Quality Class 5 (residual oil: 25 mg/m <sup>3</sup> - residual dust: 40 µm/10 mg/m <sup>3</sup> - residual water + 7 DTP/7.8 gm/m <sup>3</sup> ) (max. air consumption: 500 l/min)      |   |                   |   |                    |   |   |                    |

<sup>1</sup> Depending on the performance of the operator, on the material and design and on dark/coloured garment. Printing size: 40x20 cm / ~16x8 in